

architects+designers

S&G Studios
1 Kelso Place
Manchester M15 4LE
t: +44 (0)161 832 9842
e: mail@hodderandpartners.com
w: www.hodderandpartners.com

practice profile

hodder+partners

Hodder+Partners is a medium sized, award-winning architectural practice based in central Manchester. It is the incorporated continuation of Hodder Associates founded in 1983 and offers architectural services together with interior architecture, urban design, master planning, and product design.

In 1992 it received the Royal Fine Art Commission/Sunday Times 'Building of the Year' Award for Colne Swimming Pool in Lancashire. This resulted in the appointment to extend Arne Jacobsen's Grade I listed St. Catherine's College, Oxford, a client relationship which has now extended for some fifteen years. This culminated with the £8.7m Phase II extension (pictured), completed in 2005, and which has now received five awards.

In 1996, the practice received the most important award for a single building in British architecture, the inaugural Stirling Prize, for the

Centenary Building, University of Salford. It has since won a further 30 major national awards.

The practice has realised significant projects in the leisure, cultural, residential, and commercial sectors, together with the further and higher education sector.

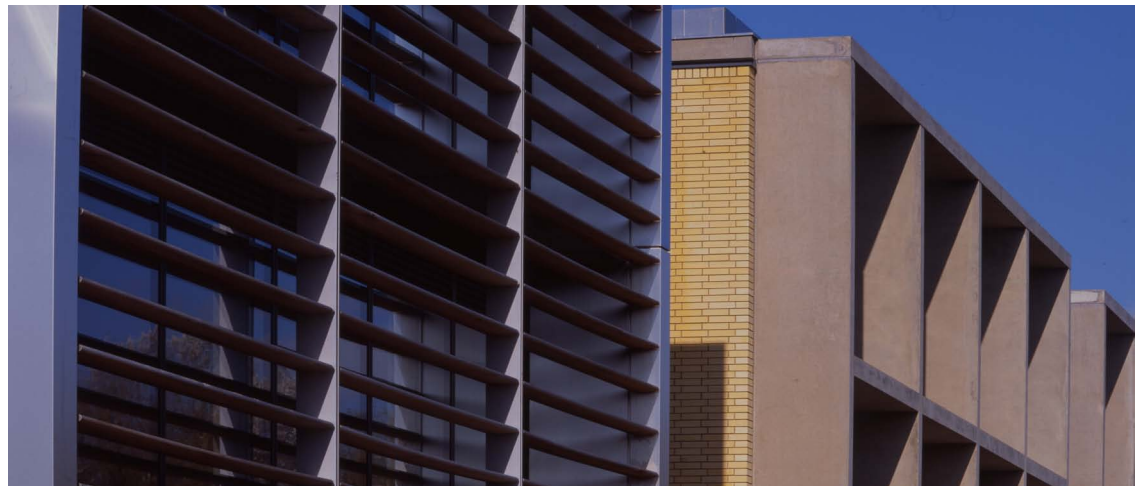
Current projects include a mixed-use development at Manchester Piccadilly Station, a 330 bed hotel along London Road, Manchester, a 600 bed student residence adjacent to Manchester University, a 140 bed student accommodation scheme in St Clements, Oxford and a new art building for St Clares Sixth Form College in Oxford.

The practice is committed to design excellence, producing thoughtful and sensitive solutions within commercial constraints. The work seeks a future in the extension and transformation of the modern tradition wherein recurring themes of space, composition of form, proportion, light and material-

ity are explored within a strong framework which is concerned with context and the making of functional buildings.

We recognise that the high value of good design in the built environment places responsibility on us as architects to understand and engage with the client and end users who are at the core of and essential to the process.

Behind every successful building is an enlightened client and the practice is renowned for its ability to understand individual clients needs and deliver a building which exceeds their expectations. We take a collaborative approach involving all stakeholders and end users in the briefing process through workshops and public consultation and are currently involved in this process on the Tynemouth Station project.



The particular qualities of the practice may be summarised in the list here:

- + The ability to establish close and pro-active working relationships with clients, consultants and contractors.
- + A flexible structure and ability to deliver to tight deadlines.
- + A clear understanding as to the nature and means of consultations during brief assimilation and early stages of the design process.
- + The ability to generate both clear and imaginative solutions within determined commercial constraints
- + Passion.
- + Stephen Hodder is involved at all stages ensuring an essential direct line of communication between practice and clients and a clear direction. Involvement at the highest level is guaranteed from inception to completion.
- + The synthesis of meticulous and rigorous detail both in performance and at an aesthetic level.
- + Fully integrated computer facilities with visualisation capabilities.
- + A comprehensive knowledge of working methods and contract.
- + Full awareness of responsibilities as team leader.